



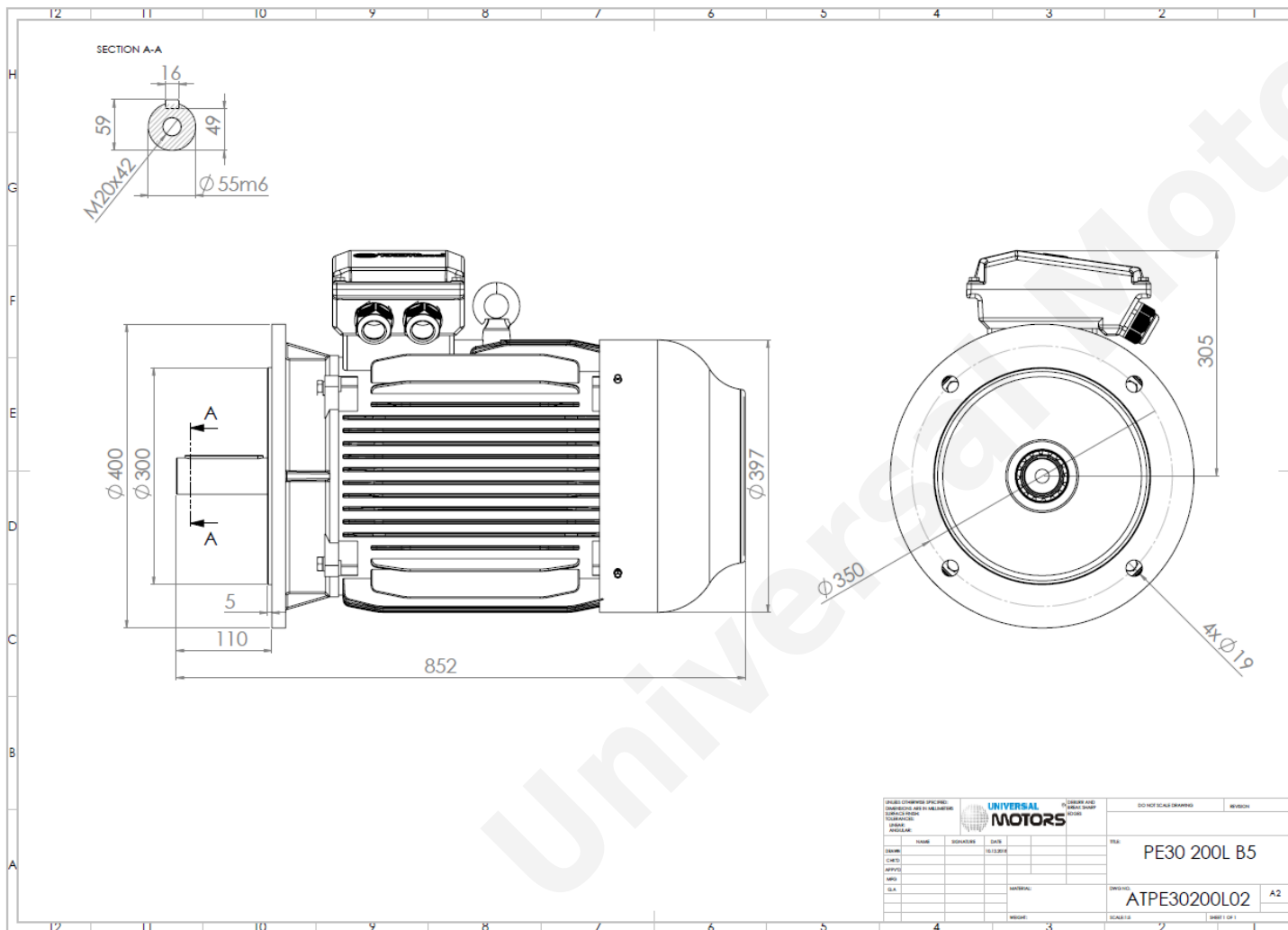
# TECHNICAL DATA

Three Phase Electric Motors - Cast Iron Frame

PE30 200 L2 6 IE3

22 kW / 30 Cv

985 RPM



|                             |                   |
|-----------------------------|-------------------|
| Motor type:                 | PE30 200 L2 6 IE3 |
| Output:                     | 22 kW / 30 Cv     |
| Speed (min <sup>-1</sup> ): | 985 RPM           |
| Frequency:                  | 50 Hz             |
| Voltage:                    | 400 V             |
| Current:                    | 42.5 A            |
| Power factor (Cos Ø):       | 0.81              |
| Poles:                      | 6                 |
| Insulation class:           | F                 |
| Temperature rise Class:     | B                 |
| Efficiency 50%:             | 91.2 %            |
| Efficiency 75%:             | 92.6 %            |
| Efficiency 100%:            | 92.3 %            |
| Torque:                     | 213 N.m           |
| Tstarting/Tnominal:         | 2.0               |
| Istarting/Inominal:         | 7.4               |
| Tmaximum/Tnominal:          | 2.1               |
| Noise:                      | 63 Db(A)          |
| Weight:                     | 282 Kg            |
| Bearing DE:                 | 6312 C3           |
| Bearing NDE:                | 6312 C3           |

Regime - S1

Altitude - 1000m

Environment Temperature - 40°C

## CONTACTS:

UNIVERSAL MOTORS Tel: +351 252 299 080  
Rua de São Brás,745 Fax: +351 252 299 089  
4480-782 VILA DO CONDE Mail: [geral@universalmotors.pt](mailto:geral@universalmotors.pt)

\* References applied only in the UK